



Technical Proposal



T2 — CNC Router for Wood



● About us

Hangzhou Chaohan Intelligent Equipment Co., Ltd.

Founded in 2010 and headquartered in Hangzhou, China, we specialize in **designing and manufacturing premium CNC equipment** for global markets. Our comprehensive product range includes:

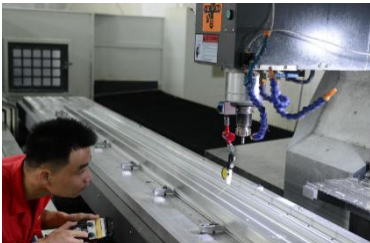
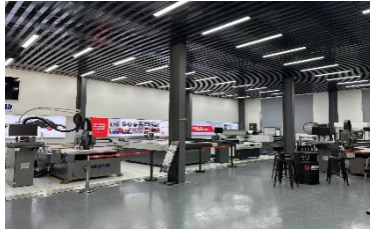
- High-Speed Vision-Guided Router Series
- High-Precision Machining Centers
- Multi-Functional Intelligent Cutting Systems
- Fiber Laser Cutting Machines
- CO₂ Laser Cutting Solutions

Manufacturing Excellence

Operating from an **5,000 m² facility** in Yuhang Liangzhu, our vertically integrated production features:

- Sheet Metal Fabrication Workshop
- Precision Assembly Center
- Dedicated R&D Departments for:
 - Software Development
 - Mechanical Engineering
 - Machine Tool Processing

Supported by **35+ skilled professionals**, we maintain an annual production capacity valued at **¥40 million** with streamlined manufacturing processes refined over a decade.



Industry Applications

Our solutions serve diverse sectors including:

- Advertising & Signage
- Craft/Gift Production
- Hardware & Mold Making
- Architectural Modeling
- Electronics Manufacturing
- Leather Goods
- Decorative Materials
- Woodworking & Furniture.etc.

Collaboration Models

Hangzhou Chaohan Intelligent Equipment Co., Ltd



Beyond our core product lines, we offer:

- OEM/ODM Partnerships
- Integrated Online & Offline Support

● Technical Parameters


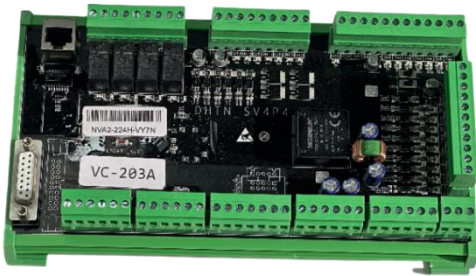


No.	Content	Specification		Notes
1	Cutting Area	X-axis	1300mm	/
		Y-axis	2500mm	/
		Z-axis	100mm	/
2	Machine Bed Indicators	Positioning accuracy	0.02mm/2000mm	/
		Positioning repeatability	0.05mm/300mm	/
		Maximum travel speed	50m/min	/
		Maximum processing speed	25m/min	/
		N.W.	About 1500kg	/
		Operating voltage	AC380V/50Hz/3Ph	/
3	Worktable	Workable	Aluminum alloy table	/
		Load weight	500kg	/
4	Control system	Handle control system	/	/
5	Drive System	X-axis	<i>Leadshine</i>	/
		Y-axis	<i>Leadshine</i>	/
		Z-axis	<i>Leadshine</i>	/
6	Motorized Spindle	Spindle	Air cooling	/
		Power	3.2kw	/
		Frequency Converter	MNT	/
7	Guide Rail	X-axis	Square guide rail	/
		Y-axis	Square guide rail	/
		Z-axis	Square guide rail	/
8	Transmission	X-axis	Screw rack	/
		Y-axis	Screw rack	/
		Z-axis	Ball screw	/
9	Air Pump	250m ³ /H	/	/



● **Details**

ITEM	PICTURE	DESCRIPTION
Air Pump		<p>Motor Specifications</p> <ul style="list-style-type: none"> - Insulation: CLASS F - Windings: 150°C rated copper wire - Core: M800-50A cold-rolled silicon steel - Bearings: NSK bearings - Seals: Fluor rubber material <p>Manufacturing Process</p> <ul style="list-style-type: none"> - Equipment: MAZAK machining tools - Impeller precision: ±0.01mm - Housing: Single-piece aircraft aluminum - Features: High heat dissipation, fine appearance, strong corrosion resistance.
Guide Rail		<p>Stainless Steel Ball Retainer: Ensures steel balls remain secured during slider operation, extending slider service life.</p> <p>Sealing Strip Design: Specialized dust-resistance enhancement on both end seals, demonstrating dust-proof advantage in (woodworking, fiber optic) industries.</p>
Servo System	 <p style="text-align: center;">Hybrid Step Servo</p>	<p>Advanced Control Capabilities</p> <p>Our system delivers superior operational efficiency through:</p> <ul style="list-style-type: none"> - Pulse/Bus Network Integration - Tool-Free Mounting & Rapid Deployment - Adaptive Load Control - Motion Control System <p>Operational Impact:</p> <ul style="list-style-type: none"> - Creates optimally smooth equipment operation - Boosts production efficiency - Enhanced throughput



<p>Chiller</p>		<ol style="list-style-type: none"> 1. Temperature Control Precision: $\pm 0.5^{\circ}\text{C}$ 2. Dual Temperature Control Modes: Suitable for different operating environments 3. Multi-Function Settings & Fault Display: Maintaining constant spindle temperature
<p>Control System</p>		<p>High-End High-Speed Motion Control System With proprietary intellectual property technology, it delivers precise cutting head movement and smooth, seamless curve motion.</p>
<p>Industrial PVC Countertop</p>		<p>Industrial PVC Panel Features:</p> <ul style="list-style-type: none"> - Robust structural integrity with exceptional weather resistance - Precision-grade flatness ensuring minimal deformation under heavy loads
<p>Machine Bed</p>		<p>Gantry Milling Machine Bed Processing The bed is machined by a portal milling machine (gantry-type). This milling equipment features a portal frame and horizontal long bed. It enables simultaneous surface processing with multiple milling cutters while maintaining machining accuracy within 0.05mm. Drilling operations achieve precise accuracy, ensuring long-term high precision operation of the machine tool.</p>



美耐特

— MEI NAI TE —

Structural
Steel
Frame



**Precision Engineered
Frame Construction**

Fabricated from structural steel using advanced welding and specialized tube welding techniques, this frame delivers exceptional rigidity and load-bearing capacity.



● **After-sales service**

A. After-Sales Service Commitment

1. Quality Assurance

All products provided by our company are original factory packaging, compliant with the international ISO9001:2015 quality certification system. We will provide product technical documents (including installation manuals, product packing lists, Chinese user manuals, certificates of conformity, and warranty credentials, etc.).

2. Delivery and Installation Timeline

Upon receiving the letter of acceptance, our company will promptly deliver the goods to the user. Both the manufacturing and inspection of products are accompanied by quality records and testing data. For product performance testing, we conduct full-process and full-performance inspections. All products undergo a 72-hour fatigue test before leaving the factory and are only packed and shipped after being confirmed qualified. Upon arrival of the goods at your company, our technical personnel will immediately visit for installation and training.

3. Product Delivery Time

Depending on the model, delivery will be made within 25 days after contract signing.

4. Warranty Commitment

We provide a 12-month warranty for all products offered during the validity period of this supply agreement. Throughout the validity period, we offer full-day service on normal working days and lifelong technical support for all products.

5. Response Time

We will respond to customer needs within 24 hours.

6. Service System

As the equipment supplier, our company provides a guarantee system for the products offered in this tender: When equipment malfunctions occur, we will dispatch designated professional technicians to carry out on-site repairs or return repairs within the specified time, if necessary.

B. Product Price Commitment

1. Under equivalent competitive conditions

Our company sincerely offers the most favorable prices to you without compromising product technical performance or altering product components.

2. During the warranty period

The supplier will provide free repair and replacement of component damage caused by quality issues. For component damage beyond the warranty period, the supplier will only charge cost price for provided accessories. In cases of equipment damage caused by the buyer's human factors, the supplier will charge cost price for repairs or provided accessories.



美耐特
— MEI NAI TE —

C. After-Sales Service Guarantee

Company Strength Assurance:

Guided by the philosophy of "sincere service with utmost dedication," our company commits to responding to customer needs within 24 hours. We resolve customer issues through telephone, fax, Internet remote service, on-site visits, and other means.