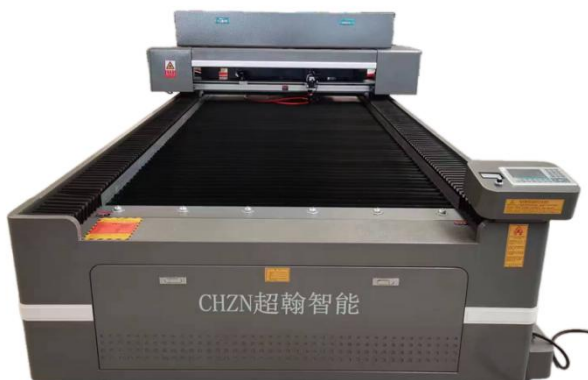




Technical Proposal



X1 — Laser Cutting Machine





● About us

Hangzhou Chaohan Intelligent Equipment Co., Ltd.

Founded in 2010 and headquartered in Hangzhou, China, we specialize in **designing and manufacturing premium CNC equipment** for global markets. Our comprehensive product range includes:

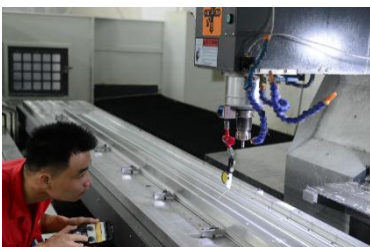
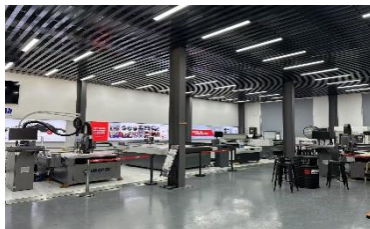
- High-Speed Vision-Guided Router Series
- High-Precision Machining Centers
- Multi-Functional Intelligent Cutting Systems
- Fiber Laser Cutting Machines
- CO₂ Laser Cutting Solutions

Manufacturing Excellence

Operating from an **5,000 m² facility** in Yuhang Liangzhu, our vertically integrated production features:

- Sheet Metal Fabrication Workshop
- Precision Assembly Center
- Dedicated R&D Departments for:
 - Software Development
 - Mechanical Engineering
 - Machine Tool Processing

Supported by **35+ skilled professionals**, we maintain an annual production capacity valued at **¥40 million** with streamlined manufacturing processes refined over a decade.



Industry Applications

Our solutions serve diverse sectors including:

- Advertising & Signage • Craft/Gift Production • Hardware & Mold Making • Architectural Modeling • Electronics Manufacturing • Leather Goods • Decorative Materials • Woodworking & Furniture.etc.

Collaboration Models

Hangzhou Chaohan Intelligent Equipment Co., Ltd



Beyond our core product lines, we offer:

- OEM/ODM Partnerships
- Integrated Online & Offline Support

● Technical Parameters (standard machine)

No.	Content	Specification	Notes
1	Working area	1300mm×2500mm	/
2	Machine size	3600mm×2050mm×1000mm	/
3	Laser power	180w/300w/450w CO2 glass tube	/
4	Cooling	Water cooling Standard water tank pump cooling or optional chiller	/
5	Max.cutting depth	20mm	/
6	Repeated positioning accuracy	±0.1mm	/
7	Working speed	0-500mm	/
8	The smallest size of character that can be processed	3mm	/
9	Operating voltage	AC220V 50Hz	/
10	The whole machine power	2500w	/
11	Feed width	1320mm	/
12	N.W.	650kg	/
13	Guide rails	Taiwan-imported linear guide rails	/
14	Transmission	Screw	/
15	OS	RD 6442 off-line system	/
16	Compatible software	CDR, CAD, AI, JDPaint, ARTCUT, PS. Etc.	/
17	File	AI, DXF, PLT, BMP, JPG, etc.	/
18	Drive system	Adaotech three-phase motor drive	/
19	Working platform	Slab platform / honeycomb platform	/
20	Exhaust air	550w centrifugal fan + 150mm blast pipe	/
21	Quality assured	Conduct quality inspections before delivery	/

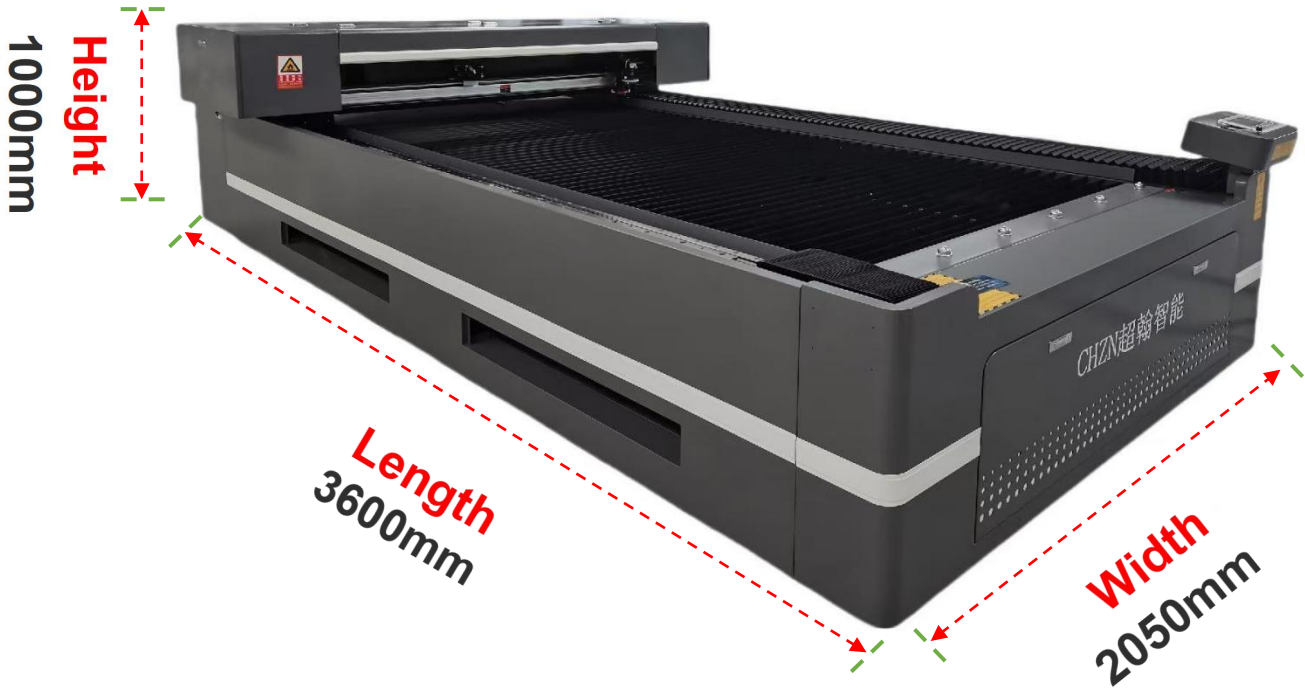
Processes materials including:

acrylic sheet, bamboo-wood composite, MDF, plywood, leather & fabric. etc.

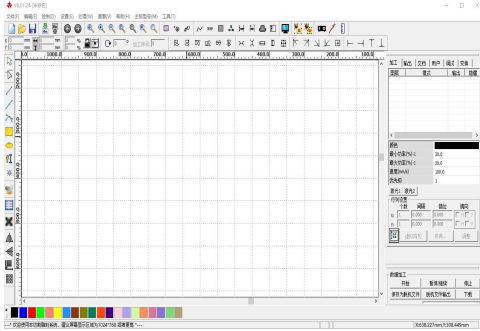



● **Details**


The exact size is based on the actual object



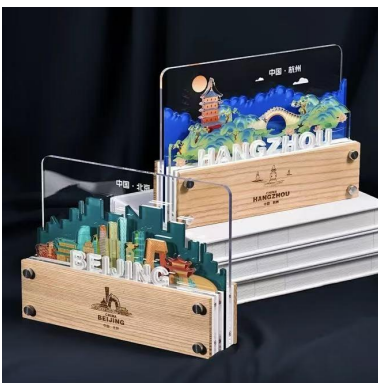


ITEM	PICTURE	CHARACTERISTIC
Software		<p>Dedicated laser processing software with robust features:</p> <ol style="list-style-type: none"> 1. Compatible with major design software; 2. Imports multiple file formats.
Interface		<p>Featuring bilingual interface for simple operation, plus two power adjustment modes (manual & automatic).</p>
Motor		<p>Driven by high-performance three-phase motors for faster, smoother operation and increased efficiency.</p>
Guide rail		<p>Incorporates genuine Taiwan-imported square linear guides, enhancing positioning accuracy and operational precision.</p>
Laser tube		<p>Equipped with a high-quality CO2 glass laser tube and imported focus lens for higher power density and finer focal points.</p>



ITEM	PICTURE	CHARACTERISTIC
Constant optical path system		In laser cutting machines, the Constant Optical Path (COP) system, also known as a Beam Path Stabilization system, is designed to maintain a consistent and stable focal point position from the laser source to the material surface across the entire working area.

● **Application**





● After-sales service

A. After-Sales Service Commitment

1. Quality Assurance

All products provided by our company are original factory packaging, compliant with the international ISO9001:2015 quality certification system. We will provide product technical documents (including installation manuals, product packing lists, Chinese user manuals, certificates of conformity, and warranty credentials, etc.).

2. Delivery and Installation Timeline

Upon receiving the letter of acceptance, our company will promptly deliver the goods to the user. Both the manufacturing and inspection of products are accompanied by quality records and testing data. For product performance testing, we conduct full-process and full-performance inspections. All products undergo a 72-hour fatigue test before leaving the factory and are only packed and shipped after being confirmed qualified. Upon arrival of the goods at your company, our technical personnel will immediately visit for installation and training.

3. Product Delivery Time

Depending on the model, delivery will be made within 25 days after contract signing.

4. Warranty Commitment

We provide a 12-month warranty for all products offered during the validity period of this supply agreement. Throughout the validity period, we offer full-day service on normal working days and lifelong technical support for all products.

5. Response Time

We will respond to customer needs within 24 hours.

6. Service System

As the equipment supplier, our company provides a guarantee system for the products offered in this tender: When equipment malfunctions occur, we will dispatch designated professional technicians to carry out on-site repairs or return repairs within the specified time, if necessary.

B. Product Price Commitment

1. Under equivalent competitive conditions

Our company sincerely offers the most favorable prices to you without compromising product technical performance or altering product components.

2. During the warranty period

The supplier will provide free repair and replacement of component damage caused by quality issues. For component damage beyond the warranty period, the supplier will only charge cost price for provided accessories. In cases of equipment damage caused by the buyer's human factors, the supplier will charge cost price for repairs or provided accessories.



美耐特
— MEI NAI TE —

C. After-Sales Service Guarantee

Company Strength Assurance:

Guided by the philosophy of "sincere service with utmost dedication," our company commits to responding to customer needs within 24 hours. We resolve customer issues through telephone, fax, Internet remote service, on-site visits, and other means.