



Technical Proposal



T3 — CNC Router



● About us

Hangzhou Chaohan Intelligent Equipment Co., Ltd.

Founded in 2010 and headquartered in Hangzhou, China, we specialize in **designing and manufacturing premium CNC equipment** for global markets. Our comprehensive product range includes:

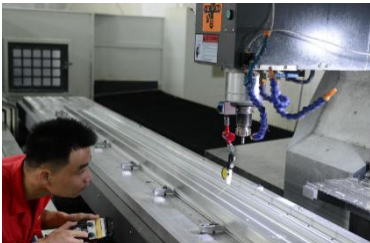
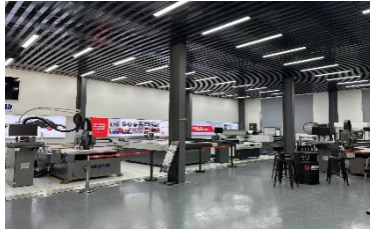
- High-Speed Vision-Guided Router Series
- High-Precision Machining Centers
- Multi-Functional Intelligent Cutting Systems
- Fiber Laser Cutting Machines
- CO₂ Laser Cutting Solutions

Manufacturing Excellence

Operating from an **5,000 m² facility** in Yuhang Liangzhu, our vertically integrated production features:

- Sheet Metal Fabrication Workshop
- Precision Assembly Center
- Dedicated R&D Departments for:
 - Software Development
 - Mechanical Engineering
 - Machine Tool Processing

Supported by **35+ skilled professionals**, we maintain an annual production capacity valued at **¥40 million** with streamlined manufacturing processes refined over a decade.



Industry Applications

Our solutions serve diverse sectors including:

- Advertising & Signage
- Craft/Gift Production
- Hardware & Mold Making
- Architectural Modeling
- Electronics Manufacturing
- Leather Goods
- Decorative Materials
- Woodworking & Furniture.etc.

Collaboration Models

Hangzhou Chaohan Intelligent Equipment Co., Ltd



Beyond our core product lines, we offer:

- OEM/ODM Partnerships
- Integrated Online & Offline Support

● Technical Parameters

No.	Content	Specification		Notes
1	Cutting Area	X-axis	1300mm	/
		Y-axis	2500mm	/
		Z-axis	100mm	/
2	Machine Bed Indicators	Positioning accuracy	0.05mm/300mm	/
		Positioning repeatability	0.05mm/300mm	/
		Maximum speed	60m/min	/
		Maximum processing speed	35m/min	/
		N.W.	About 800kg	/
	Operating voltage	AC380V/50Hz/3Ph	/	
3	Worktable	Sectioned panel workable	4-zone vacuum adsorption	/
		Load weight	500kg	/
4	CNC System	XDW	/	/
6	Drive System	X-axis	Leadshine	/
		Y-axis	Leadshine	/
		Z-axis	Leadshine	/
7	Motorized Spindle (Frequency Conversion)	Spindle	S&A chiller	3000
		Speed	4,000RPM	/
		Power	3.0kw	/
		Dynamic Balance Grade	G2.5	/
		Frequency Converter	MNT	/
8	Guide Rail	X-axis	Square guide rail (25)	LAPPING
		Y-axis	Square guide rail (25)	LAPPING
		Z-axis	Square guide rail (25)	LAPPING
9	Transmission	X-axis	Screw rack	LAPPING
		Y-axis	Screw rack	LAPPING
		Z-axis	Ball screw	TBI
11	Single Edge Cutter	Ø3.175, Ø4, Ø6	/	/
12	Air Pump	250m ³ /H	/	/
13	Machine Size	2000×3100×1600mm	/	/



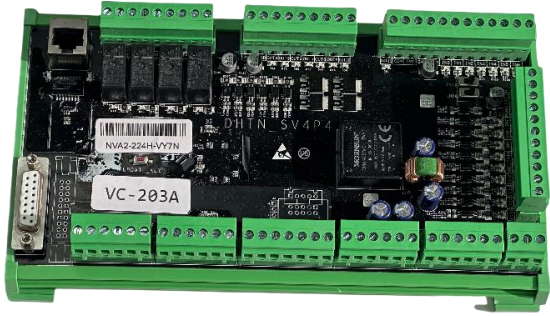



● Details

ITEM	PICTURE	DESCRIPTION
Air Pump		<p>Motor Specifications</p> <ul style="list-style-type: none">- Insulation: CLASS F- Windings: 150°C rated copper wire- Core: M800-50A cold-rolled silicon steel- Bearings: NSK bearings- Seals: Fluor rubber material <p>Manufacturing Process</p> <ul style="list-style-type: none">- Equipment: MAZAK machining tools- Impeller precision: ±0.01mm- Housing: Single-piece aircraft aluminum- Features: High heat dissipation, fine appearance, strong corrosion resistance.
Guide Rail		<p>Stainless Steel Ball Retainer:</p> <p>Ensures steel balls remain secured during slider operation, extending slider service life.</p> <p>Sealing Strip Design:</p> <p>Specialized dust-resistance enhancement on both end seals, demonstrating dust-proof advantage in (woodworking, fiber optic) industries.</p>





<p>Reducer</p>		<p>Low energy consumption, fast acceleration, superior performance, reducer efficiency up to 95%; minimal vibration, noise-free operation, maintenance-free.</p>
<p>Servo System</p>	 <p>Hybrid Step Servo</p>	<p>Advanced Control Capabilities Our system delivers superior operational efficiency through:</p> <ul style="list-style-type: none"> - Pulse/Bus Network Integration - Tool-Free Mounting & Rapid Deployment - Adaptive Load Control - Motion Control System <p>Operational Impact:</p> <ul style="list-style-type: none"> - Creates optimally smooth equipment operation - Boosts production efficiency - Enhanced throughput
	 <p>AC Servo</p>	
<p>Chiller</p>		<ol style="list-style-type: none"> 1. Temperature Control Precision: $\pm 0.5^{\circ}\text{C}$ 2. Dual Temperature Control Modes: Suitable for different operating environments 3. Multi-Function Settings & Fault Display: Maintaining constant spindle temperature



<p>Control System</p>	 <p>A green PCB control system with various components, including a microcontroller, capacitors, and connectors. A label on the board reads 'VC-203A' and 'NVA2-224H-VY7N'.</p>	<p>High-End High-Speed Motion Control System With proprietary intellectual property technology, it delivers precise cutting head movement and smooth, seamless curve motion.</p>
<p>Optional Vacuum System</p>	 <p>A control panel for the vacuum system with the MNT logo and four blue-handled vacuum zone control knobs.</p>	<p>Optional Vacuum System:</p> <ul style="list-style-type: none">- Configurable vacuum zones with high-volume airflow- Powerful holding force for superior material fixation
<p>Industrial PVC Countertop</p>	 <p>A close-up view of a dark grey, grid-patterned industrial PVC countertop.</p>	<p>Industrial PVC Panel Features:</p> <ul style="list-style-type: none">- Robust structural integrity with exceptional weather resistance- Precision-grade flatness ensuring minimal deformation under heavy loads
<p>Lubricating Oil Pump</p>	 <p>A black and clear plastic lubricating oil pump with a digital display showing '888' and a pressure gauge.</p>	<p>Automatic Lubrication System: This pump delivers targeted oil dosing to cutting blades, ensuring consistent lubrication for enhanced Production efficiency and extended machine lifespan.</p>



<p>Machine Bed</p>		<p>Gantry Milling Machine Bed Processing The bed is machined by a portal milling machine (gantry-type). This milling equipment features a portal frame and horizontal long bed. It enables simultaneous surface processing with multiple milling cutters while maintaining machining accuracy within 0.05mm. Drilling operations achieve precise accuracy, ensuring long-term high precision operation of the machine tool.</p>
<p>Structural Steel Frame</p>		<p>Precision Engineered Frame Construction Fabricated from structural steel using advanced welding and specialized tube welding techniques, this frame delivers exceptional rigidity and load-bearing capacity.</p>

● After-sales service

A. After-Sales Service Commitment

1. Quality Assurance

All products provided by our company are original factory packaging, compliant with the international ISO9001:2015 quality certification system. We will provide product



technical documents (including installation manuals, product packing lists, Chinese user manuals, certificates of conformity, and warranty credentials, etc.).

2. Delivery and Installation Timeline

Upon receiving the letter of acceptance, our company will promptly deliver the goods to the user. Both the manufacturing and inspection of products are accompanied by quality records and testing data. For product performance testing, we conduct full-process and full-performance inspections. All products undergo a 72-hour fatigue test before leaving the factory and are only packed and shipped after being confirmed qualified. Upon arrival of the goods at your company, our technical personnel will immediately visit for installation and training.

3.Product Delivery Time

Depending on the model, delivery will be made within 25 days after contract signing.

4.Warranty Commitment

We provide a 12-month warranty for all products offered during the validity period of this supply agreement. Throughout the validity period, we offer full-day service on normal working days and lifelong technical support for all products.

5.Response Time

We will respond to customer needs within 24 hours.

6.Service System

As the equipment supplier, our company provides a guarantee system for the products offered in this tender: When equipment malfunctions occur, we will dispatch designated professional technicians to carry out on-site repairs or return repairs within the specified time, if necessary.

B. Product Price Commitment

1.Under equivalent competitive conditions

Our company sincerely offers the most favorable prices to you without compromising product technical performance or altering product components.

2.During the warranty period

The supplier will provide free repair and replacement of component damage caused by quality issues. For component damage beyond the warranty period, the supplier will only charge cost price for provided accessories. In cases of equipment damage caused by the buyer's human factors, the supplier will charge cost price for repairs or provided accessories.

C. After-Sales Service Guarantee

Company Strength Assurance:

Guided by the philosophy of "sincere service with utmost dedication," our company commits to responding to customer needs within 24 hours. We resolve customer issues through telephone, fax, Internet remote service, on-site visits, and other means.