



# Technical Proposal



**X2 — Laser Cutting Machine**



## ● About us

### Hangzhou Chaohan Intelligent Equipment Co., Ltd.

Founded in 2010 and headquartered in Hangzhou, China, we specialize in **designing and manufacturing premium CNC equipment** for global markets. Our comprehensive product range includes:

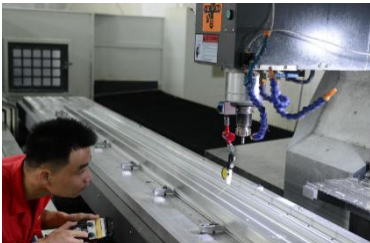
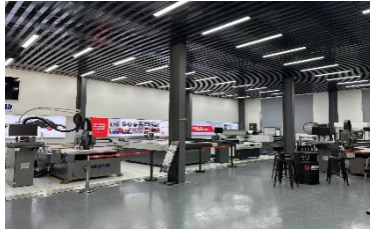
- High-Speed Vision-Guided Router Series
- High-Precision Machining Centers
- Multi-Functional Intelligent Cutting Systems
- Fiber Laser Cutting Machines
- CO<sub>2</sub> Laser Cutting Solutions

### Manufacturing Excellence

Operating from an **5,000 m<sup>2</sup> facility** in Yuhang Liangzhu, our vertically integrated production features:

- Sheet Metal Fabrication Workshop
- Precision Assembly Center
- Dedicated R&D Departments for:
  - Software Development
  - Mechanical Engineering
  - Machine Tool Processing

Supported by **35+ skilled professionals**, we maintain an annual production capacity valued at **¥40 million** with streamlined manufacturing processes refined over a decade.



### Industry Applications

Our solutions serve diverse sectors including:

- Advertising & Signage
- Craft/Gift Production
- Hardware & Mold Making
- Architectural Modeling
- Electronics Manufacturing
- Leather Goods
- Decorative Materials
- Woodworking & Furniture.etc.

### Collaboration Models

Hangzhou Chaohan Intelligent Equipment Co., Ltd



Beyond our core product lines, we offer:

- OEM/ODM Partnerships
- Integrated Online & Offline Support

## ● Technical Parameters

No.	Content	Specification
1	Working area	X-axis:1300mm
		Y-axis:2500mm
		Z-axis:60mm
2	Laser power	300w-CO2 glass tube
3	Beam quality	$m^2 \leq 1.1$
4	Workbench size	1300mm×2500mm
5	Max. Load weight	120kg
6	Max cutting thickness (acrylic)	40mm
7	Positioning speed	20m/min
8	Positioning accuracy	±0.05mm/min
9	Repeated positioning accuracy	±0.05mm
10	Power supply (50/60Hz)	Single-phase 220V
11	Full load current	20A
12	Cutting assist gas pressure	0.6MPa
13	Machine size	3600mm×1850mm×1300mm
14	N.W.	900kg



● **Configurations**

ITEM	DESCRIPTION	NOTES
Working area	X:1300mm Y:2500mm	Machine body aging treatment, processes with high-precision processing center
Laser	metal-sealed F300 laser	Beijing
Cooled mirror mount	Ensures 24/7 continuous and stable operation	Beijing
Precision adjustable mirror mount with locking mechanism	Guarantees long-term stability of the optical path	Beijing
Cutting head	Precision cutting head with quick-change lens cartridge	Beijing
Transmission	X-axis: ball screw	Taiwan
	Y-axis: ball screw	Taiwan
	Z-axis: ball screw	Taiwan
Dedicated cooling system	Precision Temperature Control ( $\pm 0.5^{\circ}\text{C}$ ) & Comprehensive Safety Protections Includes compressor delay / overcurrent protection, water flow monitoring, and high/low temperature alarms.	MNT customized
Motion control	Offline control	RD
Software	RDWORKS V8	RD
Communication interface	Ethernet, USB	RD
Air pump	High-efficient 2800RPM	/
Servo motor	Leadshine	/
Auto-focus	Input material thickness, and the system automatically locates the focal point	RD
Main contactor	LS	Korea
Main solenoid valve	2V025	OLK
Origin switch	Photoelectric type	Imported IC
Machine wiring	High-flexibility drag chain cable	Shanghai
Centrifugal exhaust fan	220V, 2800RPM	For high-efficiency fume extraction



## ● **After-sales service**

### **A. After-Sales Service Commitment**

#### **1. Quality Assurance**

All products provided by our company are original factory packaging, compliant with the international ISO9001:2015 quality certification system. We will provide product technical documents (including installation manuals, product packing lists, Chinese user manuals, certificates of conformity, and warranty credentials, etc.).

#### **2. Delivery and Installation Timeline**

Upon receiving the letter of acceptance, our company will promptly deliver the goods to the user. Both the manufacturing and inspection of products are accompanied by quality records and testing data. For product performance testing, we conduct full-process and full-performance inspections. All products undergo a 72-hour fatigue test before leaving the factory and are only packed and shipped after being confirmed qualified. Upon arrival of the goods at your company, our technical personnel will immediately visit for installation and training.

#### **3. Product Delivery Time**

Depending on the model, delivery will be made within 25 days after contract signing.

#### **4. Warranty Commitment**

We provide a 12-month warranty for all products offered during the validity period of this supply agreement. Throughout the validity period, we offer full-day service on normal working days and lifelong technical support for all products.

#### **5. Response Time**

We will respond to customer needs within 24 hours.

#### **6. Service System**

As the equipment supplier, our company provides a guarantee system for the products offered in this tender: When equipment malfunctions occur, we will dispatch designated professional technicians to carry out on-site repairs or return repairs within the specified time, if necessary.

### **B. Product Price Commitment**

#### **1. Under equivalent competitive conditions**

Our company sincerely offers the most favorable prices to you without compromising product technical performance or altering product components.

#### **2. During the warranty period**

The supplier will provide free repair and replacement of component damage caused by quality issues. For component damage beyond the warranty period, the supplier will only charge cost price for provided accessories. In cases of equipment damage caused by the buyer's human factors, the supplier will charge cost price for repairs or provided accessories.



**美耐特**  
— MEI NAI TE —

---

### **C. After-Sales Service Guarantee**

#### **Company Strength Assurance:**

Guided by the philosophy of "sincere service with utmost dedication," our company commits to responding to customer needs within 24 hours. We resolve customer issues through telephone, fax, Internet remote service, on-site visits, and other means.