



Technical Proposal



X2-1390 — Laser Cutting Machine



● About us

Hangzhou Chaohan Intelligent Equipment Co., Ltd.

Founded in 2010 and headquartered in Hangzhou, China, we specialize in **designing and manufacturing premium CNC equipment** for global markets. Our comprehensive product range includes:

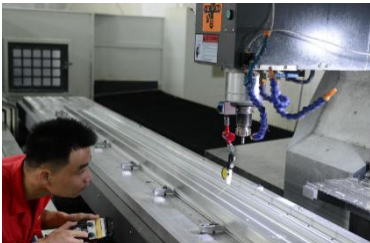
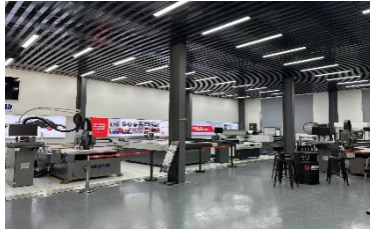
- High-Speed Vision-Guided Router Series
- High-Precision Machining Centers
- Multi-Functional Intelligent Cutting Systems
- Fiber Laser Cutting Machines
- CO₂ Laser Cutting Solutions

Manufacturing Excellence

Operating from an **5,000 m² facility** in Yuhang Liangzhu, our vertically integrated production features:

- Sheet Metal Fabrication Workshop
- Precision Assembly Center
- Dedicated R&D Departments for:
 - Software Development
 - Mechanical Engineering
 - Machine Tool Processing

Supported by **35+ skilled professionals**, we maintain an annual production capacity valued at **¥40 million** with streamlined manufacturing processes refined over a decade.



Industry Applications

Our solutions serve diverse sectors including:

- Advertising & Signage
- Craft/Gift Production
- Hardware & Mold Making
- Architectural Modeling
- Electronics Manufacturing
- Leather Goods
- Decorative Materials
- Woodworking & Furniture.etc.

Collaboration Models

Hangzhou Chaohan Intelligent Equipment Co., Ltd



Beyond our core product lines, we offer:

- OEM/ODM Partnerships
- Integrated Online & Offline Support

● Technical Parameters

No.	Content	Specification
1	Working area	X-axis:1220mm
		Y-axis:850mm
		Z-axis:60mm
2	Laser power	300w-CO2 glass tube
3	Beam quality	$m^2 \leq 1.1$
4	Max. Load weight	80kg
5	Max. cutting thickness (acrylic)	30mm
6	Position speed	20m/min
7	Position accuracy	$\pm 0.025\text{mm}$
8	Repeat position accuracy	$\pm 0.025\text{mm}$
9	Power supply	Single-phase 220V
10	Full-load current	20A
11	Assistant cutting air pressure	0.6MPa
12	Dimension	1600mm×1750mm×1200mm
13	N.W.	600kg
14	Covering area	4000mm×3000mm



● Configurations

No.	Content	Note
3	Cutting head	Quick-change lens precision cutting head
4	Precision mirror mount	Water-cooled mirrors with fine adjustment
5	Transmission	Ball screw + Linear guides
6	Specialized cooling system	Temperature control accuracy: $\pm 0.5^{\circ}\text{C}$; multiple alarms/protections (compressor delay, over-current, flow, high/low temperature)
7	Motion control	Offline control
8	Servo drive	Precision servo motors
9	CCD camera	RD
10	Control system	RD
11	Operation software	RD V8
12	Main contactor	ZT series
13	Main solenoid valve	2V025
14	Home switch	Precision photoelectric type
15	Machine wiring	High-flexibility drag chain cable

● After-sales service

A. After-Sales Service Commitment

1. Quality Assurance

All products provided by our company are original factory packaging, compliant with the international ISO9001:2015 quality certification system. We will provide product technical documents (including installation manuals, product packing lists, Chinese user manuals, certificates of conformity, and warranty credentials, etc.).

2. Delivery and Installation Timeline



Upon receiving the letter of acceptance, our company will promptly deliver the goods to the user. Both the manufacturing and inspection of products are accompanied by quality records and testing data. For product performance testing, we conduct full-process and full-performance inspections. All products undergo a 72-hour fatigue test before leaving the factory and are only packed and shipped after being confirmed qualified. Upon arrival of the goods at your company, our technical personnel will immediately visit for installation and training.

3.Product Delivery Time

Depending on the model, delivery will be made within 25 days after contract signing.

4.Warranty Commitment

We provide a 12-month warranty for all products offered during the validity period of this supply agreement. Throughout the validity period, we offer full-day service on normal working days and lifelong technical support for all products.

5.Response Time

We will respond to customer needs within 24 hours.

6.Service System

As the equipment supplier, our company provides a guarantee system for the products offered in this tender: When equipment malfunctions occur, we will dispatch designated professional technicians to carry out on-site repairs or return repairs within the specified time, if necessary.

B. Product Price Commitment

1.Under equivalent competitive conditions

Our company sincerely offers the most favorable prices to you without compromising product technical performance or altering product components.

2.During the warranty period

The supplier will provide free repair and replacement of component damage caused by quality issues. For component damage beyond the warranty period, the supplier will only charge cost price for provided accessories. In cases of equipment damage caused by the buyer's human factors, the supplier will charge cost price for repairs or provided accessories.

C. After-Sales Service Guarantee

Company Strength Assurance:

Guided by the philosophy of "sincere service with utmost dedication," our company commits to responding to customer needs within 24 hours. We resolve customer issues through telephone, fax, Internet remote service, on-site visits, and other means.