



Technical Proposal



X6 — Fiber Laser Cutting Machine





● About us

Hangzhou Chaohan Intelligent Equipment Co., Ltd.

Founded in 2010 and headquartered in Hangzhou, China, we specialize in **designing and manufacturing premium CNC equipment** for global markets. Our comprehensive product range includes:

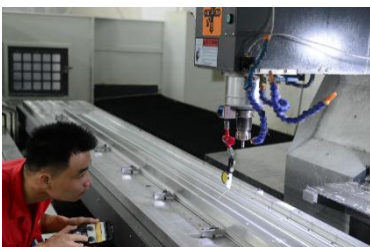
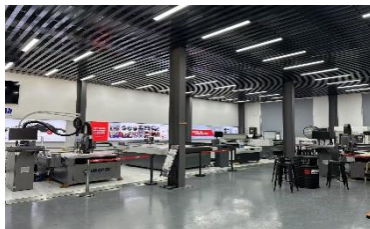
- High-Speed Vision-Guided Router Series
- High-Precision Machining Centers
- Multi-Functional Intelligent Cutting Systems
- Fiber Laser Cutting Machines
- CO₂ Laser Cutting Solutions

Manufacturing Excellence

Operating from an **5,000 m² facility** in Yuhang Liangzhu, our vertically integrated production features:

- Sheet Metal Fabrication Workshop
- Precision Assembly Center
- Dedicated R&D Departments for:
 - Software Development
 - Mechanical Engineering
 - Machine Tool Processing

Supported by **35+ skilled professionals**, we maintain an annual production capacity valued at **¥40 million** with streamlined manufacturing processes refined over a decade.



Industry Applications

Our solutions serve diverse sectors including:

- Advertising & Signage • Craft/Gift Production • Hardware & Mold Making • Architectural Modeling • Electronics Manufacturing • Leather Goods • Decorative Materials • Woodworking & Furniture.etc.

Collaboration Models

Hangzhou Chaohan Intelligent Equipment Co., Ltd



Beyond our core product lines, we offer:

- OEM/ODM Partnerships
- Integrated Online & Offline Support

● Technical Parameters

No.	Content	Specification
1	Cutting accuracy	±0.5mm
2	Tube diameter range	Φ10 - Φ220 mm (round tube) Φ10 - Φ150 mm (square tube)
3	Max. tube length	6000mm
4	Max speed of chuck	120rpm
5	Drive	AC servo motor
6	Operating voltage	380V/50Hz 3Ph
7	Main structure	Steel construction
8	Laser power	6000w
9	Max. speed	50m/min
10	Dimension	9000mm×1800mm×2350mm
11	N.W.	3500kg



● **Configurations**

ITEM	DESCRIPTION	QUANTITY	BRAND
Base	Travel: 6000mm	1	MNT custom
Sheet metal parts	/	1	MNT custom
Motor	X-axis (include servo motor)	1	Leadshine
	Y-axis (include servo motor)	1	Leadshine
	Z-axis (include servo motor)	1	Leadshine
	B-axis (include servo motor)	2	Leadshine
Reducer	/	4	Motor-France
Sliding table	/	1	MNT custom
Tube support	/	1	MNT custom
Transformer	/	1	Chinese
Hydraulic circuit	/	1	Chinese
Guide rail	X-axis	2	LAPPING-Taiwan
	Y-axis	2	LAPPING-Taiwan
Rack & pinion	X-axis	1	YYC-Taiwan
	Y-axis	1	YYC-Taiwan
Drag chain	X-axis	1	Chinese
	Y-axis	1	Chinese
	Z-axis	1	Chinese
Guideway cover	X-axis	2	Chinese
	Y-axis	4	Chinese
Pneumatic chuck	Φ20–Φ220mm, double-acting	2	Ruika
Laser source	/	1	Raycus
Cutting head	/	1	Raytools
Auxiliary equipment			
Electrical components	/	1	Schneider, France
Industrial PC & display	Include mouse and keyboard	1	MNT custom
Control system	Model: 3000S	1	FSCut
Pneumatic system	Includes proportional valve	1	SMC, Japan

● **Details**



Laser: Raycus

- Compact size, lightweight
- Easy integration, enhanced performance
- Fully sealed design
- More stable operation



Cutting head: Raytools

- Focus length: 125mm/150mm/200mm
- Collimation length: 750mm/100mm
- Focusing range: -10mm-+10mm
- Focusing speed: $\leq 100\text{mm/s}$
- Auxiliary gas: $\leq 2.5\text{Mpa}$
- N.W.: 3.9kg



Chiller: S&A



● **After-sales service**

A. After-Sales Service Commitment

1. Quality Assurance

All products provided by our company are original factory packaging, compliant with the international ISO9001:2015 quality certification system. We will provide product technical documents (including installation manuals, product packing lists, Chinese user manuals, certificates of conformity, and warranty credentials, etc.).

2. Delivery and Installation Timeline

Upon receiving the letter of acceptance, our company will promptly deliver the goods to the user. Both the manufacturing and inspection of products are accompanied by quality records and testing data. For product performance testing, we conduct full-process and full-performance inspections. All products undergo a 72-hour fatigue test before leaving the factory and are only packed and shipped after being confirmed qualified. Upon arrival of the goods at your company, our technical personnel will immediately visit for installation and training.

3. Product Delivery Time

Depending on the model, delivery will be made within 25 days after contract signing.

4. Warranty Commitment

We provide a 12-month warranty for all products offered during the validity period of this supply agreement. Throughout the validity period, we offer full-day service on normal working days and lifelong technical support for all products.

5. Response Time

We will respond to customer needs within 24 hours.

6. Service System

As the equipment supplier, our company provides a guarantee system for the products offered in this tender: When equipment malfunctions occur, we will dispatch designated professional technicians to carry out on-site repairs or return repairs within the specified time, if necessary.

B. Product Price Commitment

1. Under equivalent competitive conditions

Our company sincerely offers the most favorable prices to you without compromising product technical performance or altering product components.

2. During the warranty period

The supplier will provide free repair and replacement of component damage caused by quality issues. For component damage beyond the warranty period, the supplier will only charge cost price for provided accessories. In cases of equipment damage caused by the buyer's human factors, the supplier will charge cost price for repairs or provided accessories.



美耐特

— MEI NAI TE —

C. After-Sales Service Guarantee

Company Strength Assurance:

Guided by the philosophy of "sincere service with utmost dedication," our company commits to responding to customer needs within 24 hours. We resolve customer issues through telephone, fax, Internet remote service, on-site visits, and other means.